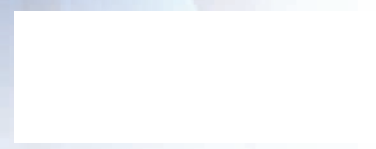
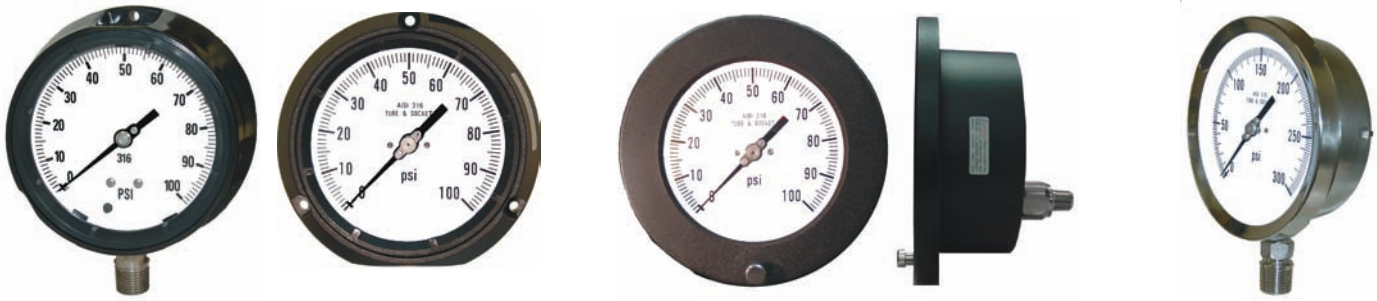




**PRESSURE & TEMPERATURE
INSTRUMENTS**



PROCESS PRESSURE GAUGES



4 1/2" SAFETY CASE PROCESS GAUGES
4501 4502

Phenolic Safety Case - Liquid Filled
316 SS Tube & Socket (Monel Available)
Single Scale - PSI (Dual Scale Available)
Plastic Lens, Micro Adjustable Pointer
SS Movement with Overload & Underload Stops
0.5% Accuracy
Ranges: Vacuum - 20,000 PSI
Note: Special Dial Ranges and Artwork Available from Stock

4 1/2" OR 6" PANEL MOUNT
4504 OR 6504

Black Aluminum Case and Ring
316 SS Tube & Socket (Monel Available)
Single Scale - PSI (Dual Scale Available)
Plastic Lens, Micro Adjustable Pointer
SS Movement with Overload & Underload Stops
0.5% Accuracy
Ranges: Vacuum - 20,000 PSI
Note: Special Dials Available from Stock

4 1/2" SS SAFETY CASE
4501-SC

Stainless Steel Liquid Fillable Case
316 SS Tube & Socket
Single Scale - PSI
Plastic Lens, Adjustable Pointer
SS Movement with Overload Stops
0.5% Accuracy
Ranges: Vacuum - 20,000 PSI

HEAVY DUTY INDUSTRIAL GAUGES



2 1/2", 4" OR 6" BOTTOM CONNECT
311D 4001 6001

Stainless Steel Liquid Fillable Case
316 SS Tube & Socket Welded at Case
Single Scale - PSI (Dual Scale Available)
Laminated Safety Glass Lens, Adjustable Pointer
SS Movement with Overload & Underload Stops
1% Accuracy
Ranges: Vacuum - 20,000 PSI
Note: Special Dials Available from Stock

2 1/2", 4" OR 6" PANEL MOUNT
314LB 314D 6004

Stainless Steel Liquid Fillable Case
316 SS Tube & Socket Welded at Case
Single Scale - PSI (Dual Scale Available)
Removeable Bezel, Adjustable Pointer
Front Flange Panel Mount, Lower Back Connect
1% Accuracy
Ranges: Vacuum - 20,000 PSI
Note: Special Dials Available from Stock

4" AUTO CLAVE
4001-9Lx

SS Liquid Fillable Case
316 SS Tube & Socket
Welded at Case
Single Scale - PSI
Under & Overload Stops
0.5% Accuracy
10, 15 or 20,000 PSI
9/16 MP Male Connection

2 1/2" FORGED BRASS
601L

Polished Brass Case
1/4" Bottom Connection
Brass Tube & Socket
Single Scale - PSI
Liquid Filled, Plastic Lens
1.5% Accuracy
Ranges: Vac. - 10,000 PSI

INDUSTRIAL PRESSURE GAUGES



4 1/2", 6" OR 8 1/2" DIAL SIZE
115D

Black Steel Case, Chrome Bezel
Bottom Connect, Back Flange
Brass Tube & Socket
Single Scale - PSI (Dual Scale Available)
Plastic Lens, Adjustable Pointer
1% Accuracy SS Movement
Ranges: Vacuum - 1,000 PSI
Note: Special Dials Available from Stock

LOW PRESSURE
LP2 LP1

2 1/2" or 4" Chrome Plated
Brass Internals, Plastic Lens
Bottom, Back or Panel Mount
Zero Adjust on Back of Case
1.5% Accuracy
1/4" NPT (1/2" Available)

ALTITUDE GAUGE
ALTITUDE

3 1/2" or 4 1/2" Dial Size
Black Steel Case
Brass Connection
PSI & Ft of Water Dual Scale
with Red Set Hand
1/4" NPT Bottom Connection
3-2-3% Accuracy

6" TEST GAUGE
MVE7

SS Liquid Fillable Case
316 SS Tube & Socket
Single Scale - PSI
Safety Glass Lens
SS Movement
0.25% Accuracy
Ranges: Vac. - 10,000 PSI

2 1/2" DIGITAL
DPG

Aluminum Case
316 SS Socket
PSI/Bar/KGCM²
Backlit Display
Peak Hold
0.25% Accuracy
Ranges - 5,000 PSI
Battery Operated

DIAPHRAGM SEALS



MINI SEALS

FULL SIZE

SANITARY

WELDED

SPECIALS

SEAL ASSEMBLIES

MOLDED

Precision Instrument Company is a full line diaphragm seal manufacturer. Diaphragm seals are designed to protect instruments from severe applications. PIC manufactures diaphragm seals in all sizes, connections and materials, including seals for gauges, transmitters, switches and more. In addition, PIC attaches instruments and fill systems, providing many options with quick delivery.

NEEDLE VALVES



SUPER MINI

MINI

FULL SIZE BODY

HEX BODY

MULTIPOINT

BLEED

LONG BODY

These high quality, instrumentation grade needle valves are designed for heavy-duty process applications and industrial applications. PIC carries a large inventory of hard seat (10,000 PSI) and soft seat (6,000 PSI) valves in carbon steel and stainless steel. Needle valves are available in 1/4" through 1" NPT, straight or angle pattern, male x male, female x female or male x female.

AMMONIA REFRIGERATION GAUGES



DRY GAUGE
401A

2 1/2" or 4" Dial Sizes
Chrome Plated Steel Case
316 SS Tube, Steel Socket
1/4" NPT Bottom Connection
Plastic Lens
3-2-3 % Accuracy

LIQUID FILLED GAUGE
AMMONIA-LF

2 1/2" or 4" Dial Sizes
Stainless Steel Case
316 SS Tube & Socket
1/4" NPT Bottom Connection
Plastic Lens
1.5% Accuracy

PROCESS
4501-NH3

4 1/2" Dial Size
Phenolic Safety Case
316 SS Tube & Socket
1/4" or 1/2" NPT, Bottom
Plastic Lens
0.5% Accuracy

ALL STAINLESS
MIX7-NH3

6" Dial Size
Stainless Steel Case
316 SS Tube & Socket
1/4" or 1/2" NPT, Panel Mt
Glass Lens
1% Accuracy

8 1/2" LARGE DIAMETER
AMMONIA

8 1/2" Dial Size
Aluminum Case
316 SS Tube & Socket
1/4" NPT, Wall Mount
Plastic Lens
1% Accuracy

THERMOMETERS



BIMETAL THERMOMETERS BxBx BxAx

Back Angle, Adjustable Angle or Bottom Outlet
2", 3" & 5" Anti-Parallax Dial with Recalibration Feature
All SS Construction – Hermetically Sealed
½" NPT Standard, Stem Welded to Connection
Glass Lens Standard
Vibration Resistant Design
+/- 1% Accuracy with Fast Response
All Ranges up to 1000°F Available

9" SCALE INDUSTRIAL AS5x9EA SDT

Adjustable Angle with Swivel
Cyclac Or Aluminum Case
Glass Lens, *** Mercury Free
3 ½" or 6" Stem Length
Single Scale F or C or Dual Scale F&C
+/- 1% Accuracy
Solar Digital Industrial Available

POCKET TEST THERMOMETERS B1B5 DBT

Bi-metal & Digital Type
1" Dial Size Standard, 5" SS Stem Standard
Protective Sleeve with Pocket Clip Standard
Ranges: -40/160°F, 25/125°F, 0-220°F, 50-550°F&C
Digital Type: -58°F to 302°F
Both Have Recalibration Feature

MORE THERMOMETERS ...



REMOTE THERMOMETERS

2", 2½", 3½", 4½" Dial Sizes
Stainless Steel Case Standard
(Other Case Materials Available)
Front Flange, U-Clamp or Back Flange
Bulb & Capillary Available Materials:
Bronze, SS, Nickel Plated And More
Ranges Available From -60°F to 350°F

ECONOMY SCALE TYPE 162F 163F

Bottom or Back Connection
5" Scale Enamel Coated Steel
Dual Scale 40-260°F&C
½" NPT Connection
Brass or Steel Well Included

HOT WATER BIMETAL B2B2-HW or -SW

2" Dial, 32-240°F & C
2½" Aluminum Stem
Aluminum Case, Plastic Lens
Snap on Brass Well
With ½" NPT or ¼" Sweat Conn

MAGNETIC TYPE B2MS

2" Dial Surface Type
All Aluminum Design
Various Ranges Available
Clamp on Type or Spring
Held Also Available

THERMOWELLS



STANDARD

LAGGING

FLANGED

RING TYPE JOINT

SOCKET WELD

VAN STONE

TEST PORT

Precision Instrument Company is a full line thermowell manufacturer. Thermowells are designed to protect temperature sensors of all types. PIC manufactures all sizes, connections and materials, offering thermowells for bimetal, industrial and filled system thermometers, RTDs, thermocouples and more. Standard thermowells are in stock for immediate delivery. PIC also has the ability to manufacture custom wells according to customer specifications.

UTILITY GAUGES



STEM MOUNT
101D

Dial Sizes: 1½", 2", 2½", 3½", 4½"
Connection: ½" NPT on 1½" & 2"
¼" NPT on 2", 2½", 3½", 4½"
Black Steel Case, Bottom Connect
Bronze Tube, Socket & Internals
Plastic Lens Standard
Accuracy: 3-2-3 %



BACK MOUNT
102D

Dial Sizes: 1½", 2", 2½", 3½"
Connection: ½" NPT on 1½" & 2"
¼" NPT on 2", 2½", 3½"
Black Steel Case, Center Back Conn
Bronze Tube, Socket & Internals
Plastic Lens Standard
Accuracy: 3-2-3 %



U-CLAMP MOUNT
103D

Dial Sizes: 1½", 2", 2½", 3½"
Connection: ½" NPT on 1½" & 2"
¼" NPT on 2", 2½", 3½"
Chrome Plated, U-Clamp Panel Mt
Bronze Tube, Socket & Internals
Plastic Lens Standard
Accuracy: 3-2-3 %



FRONT FLANGE MOUNT
104D

Dial Sizes: 1½", 2", 2½", 3½"
Connection: ½" NPT on 1½" & 2"
¼" NPT on 2", 2½", 3½"
Chrome Plated, Front Flange Panel Mt
Bronze Tube, Socket & Internals
Plastic Lens Standard
Accuracy: 3-2-3 %

LIQUID FILLED GAUGES



STEM MOUNT
201L

Dial Sizes: 1½", 2", 2½", 4"
Connection: ½" NPT on 1½" & 2"
¼" NPT on 2", 2½" & 4"
SS Case, Bottom Connection
Bronze Tube, Socket & Internals
Glycerine Fill, Plastic Lens
Accuracy: 2½" = 1.5%, 4" = 1%
1½" & 2" Dial = 3-2-3 %



BACK MOUNT
202L

Dial Sizes: 1½", 2", 2½", 4"
Connection: ½" NPT on 1½" & 2"
¼" NPT on 2", 2½" & 4"
SS Case, Back Connection
Bronze Tube, Socket & Internals
Glycerine Fill, Plastic Lens
Accuracy: 2½" = 1.5%, 4" = 1%
1½" & 2" Dial = 3-2-3 %



U-CLAMP MOUNT
203L

Dial Sizes: 1½", 2", 2½", 4"
Connection: ½" NPT on 1½" & 2"
¼" NPT on 2", 2½" & 4"
SS Case, U-Clamp Panel Mount
Bronze Tube, Socket & Internals
Glycerine Fill, Plastic Lens
Accuracy: 2½" = 1.5%, 4" = 1%
1½" & 2" Dial = 3-2-3 %



FRONT FLANGE MOUNT
204L

Dial Sizes: 1½", 2", 2½", 4"
Connection: ½" NPT on 1½" & 2"
¼" NPT on 2", 2½" & 4"
SS Case, Front Flange Panel Mount
Bronze Tube, Socket & Internals
Glycerine Fill, Plastic Lens
Accuracy: 2½" = 1.5%, 4" = 1%
1½" & 2" Dial = 3-2-3 %

ALL STAINLESS STEEL GAUGES



STEM MOUNT
301L

Dial Sizes: 1½", 2", 2½", 4"
Connection: ½" NPT on 1½" & 2"
¼" NPT on 2", 2½" & 4"
SS Case, Bottom Connection
316 SS Tube and Socket
Glycerine Fill, Plastic Lens
Accuracy: 2½" = 1.5%, 4" = 1%
1½" & 2" Dial = 3-2-3 %



BACK MOUNT
302L

Dial Sizes: 1½", 2", 2½", 4"
Connection: ½" NPT on 1½" & 2"
¼" NPT on 2", 2½" & 4"
SS Case, Back Connection
316 SS Tube and Socket
Glycerine Fill, Plastic Lens
Accuracy: 2½" = 1.5%, 4" = 1%
1½" & 2" Dial = 3-2-3 %



U-CLAMP MOUNT
303L

Dial Sizes: 1½", 2", 2½", 4"
Connection: ½" NPT on 1½" & 2"
¼" NPT on 2", 2½" & 4"
SS Case, U-Clamp Panel Mount
316 SS Tube and Socket
Glycerine Fill, Plastic Lens
Accuracy: 2½" = 1.5%, 4" = 1%
1½" & 2" Dial = 3-2-3 %



FRONT FLANGE MOUNT
304L

Dial Sizes: 1½", 2", 2½", 4"
Connection: ½" NPT on 1½" & 2"
¼" NPT on 2", 2½" & 4"
SS Case, Front Flange Panel Mount
316 SS Tube and Socket
Glycerine Fill, Plastic Lens
Accuracy: 2½" = 1.5%, 4" = 1%
1½" & 2" Dial = 3-2-3 %

TRIDICATORS



INDUSTRIAL TRIDICATORS TRI-SQ- TRI-RC-

Square Dial or Round Dial
3 1/2" Dial, Pressure & Temperature
1/2" NPT Bottom or Back Connection
Grey Steel Case, Glass Lens
Brass Stem & Connection

COMMERCIAL TRIDICATORS TRI-RC-3.25 TRI-RC-254

2 1/2" or 3 1/4" Round Dial
Dual Scale Pressure & Temperature
1/4" or 1/2" NPT Back Connection
Black Steel Case, Plastic Lens
Brass Stem & Connection

OEM TRIDICATORS

2 1/2", 3 1/4" or 3 1/2" Dial Sizes
Custom Stem Lengths and Dials
Dual Temperature and Pressure
Connections, Ranges and Configurations
as Required

GAS TEST

HOSE TEST

CONTRACTOR

ACCESSORIES



SYSTEM PIPING TEST GAUGES GT-

2" Dial, Black Steel Case, Plastic Lens
Brass Internals, Vertical or Horizontal Type
Hex Body or Bell Type Body Available
1/2", 3/4" or 1" NPT Pipe Connections
Complete with Air Valve & Cap



HOSE GAUGE – DRY HOSE HOSE-MAX

2 1/2" Dial, Black Plastic Case
Brass Internals, Plastic Lens
Top Connection, Stem Mount
3/4" FNPT Hose Connection
With or Without Max Pointer



4 1/2" CONTRACTOR GAUGE CONTRACTOR-4LX

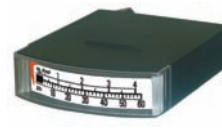
4 1/2" Dial
Stainless Steel Case
Brass Internals, Plastic Lens
1/4" Bottom Connection Stem Mount
1% Accuracy



GAUGE ACCESSORIES

A14 = FxF Gauge Cock
A15 = MxF Gauge Cock
NV-B-1/4 = FxF Needle Valve
BW42 = 1/4" Brass Snubber
A031 = Pigtail Siphon
D-12361.7 = SS Cooling Tower

ADDITIONAL ITEMS AND SPECIALS



CUSTOM LOGO

USE NO OIL

HEX BODY HIGH PRESSURE

SPIRAL TUBE

CANNERS

RECTANGULAR GAUGE

TOOLS

ADDERS, OPTIONS & OTHER PRODUCTS AVAILABLE

Accessories: Snubbers, Gauge Cocks, Needle Valves, Pigtails, Test Plugs, Sample Cases, Gauge Tools
Dials: Single or Dual Scale, Special Ranges, Custom Logos
Connections: SAE, BSP, Female, 1/4"HP Male, 9/16"MP Male, Nickel Plated Socket and More
Case: Chrome Plated, Brass Case, Plastic Case
Services: Gauge Certification, Oxygen Cleaning, Repair, Diaphragm Seal Assembly and filling
Gauge Fills: Glycerine, Glycol, Silicone, Halocarbon
Additional Options: Glass Lens, Rubber Covers, Max Pressure Pointers, Back Flanges Front Flanges, U-Clamps, Adapters and more
Special Application Gauges: Mining, Refrigerant Tanker Truck, Dental, Food and Pharmaceutical, Paintball and more
Pressure Transmitters: 4-20mA, 1-5 Volt, 0-10 Volt

In addition to the products shown in this catalog, Precision Instrument Company can fill special requests and custom orders.

For Local Support & Service Contact:

Motion Industries